

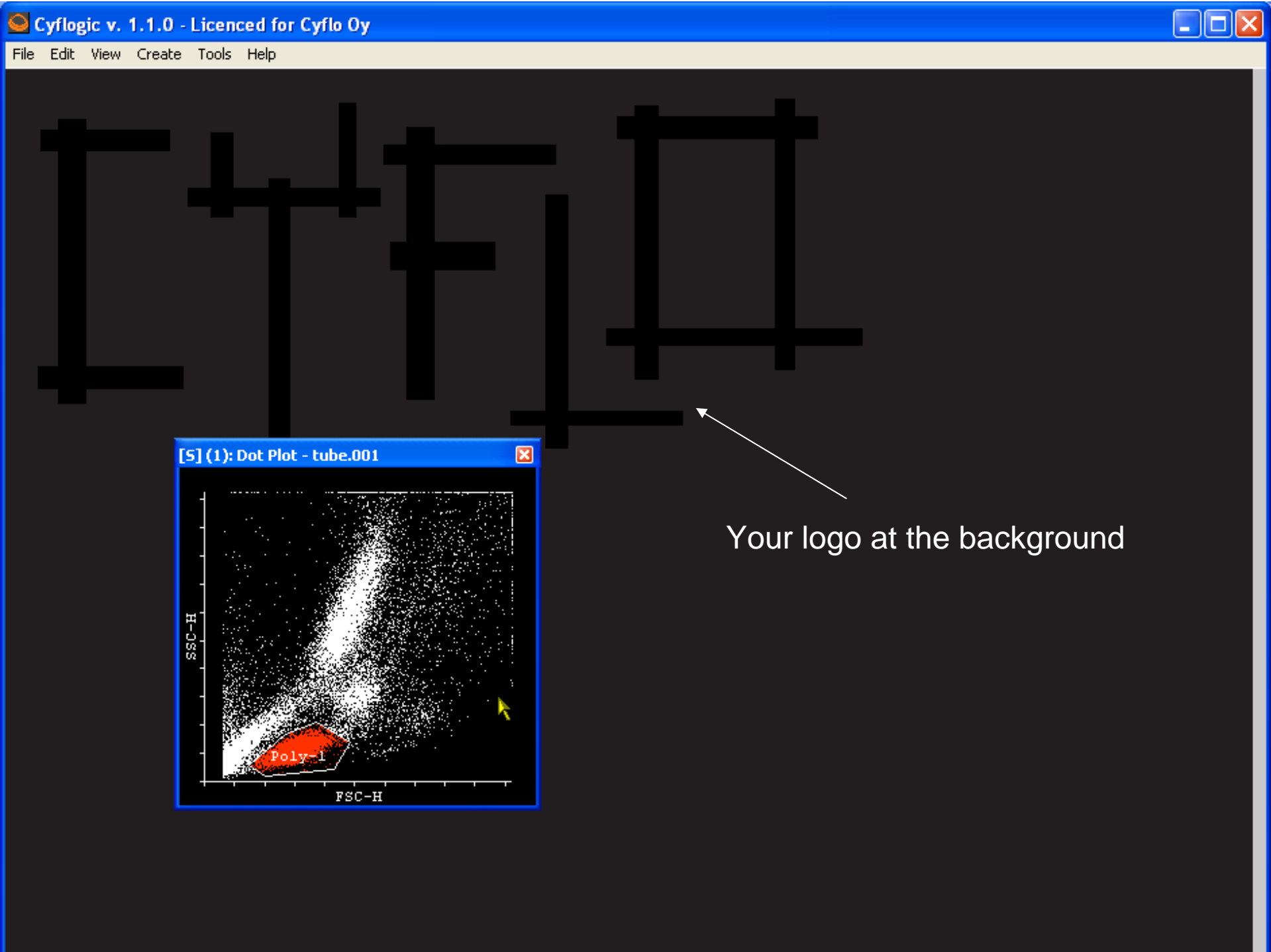


Features of Licenced version 1.2.0

Instruction date 28.10.2008

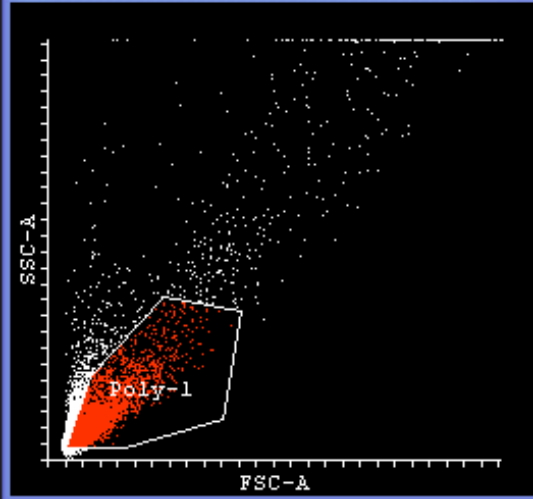
Licensed version

- When your research group / company buys a licence for Cyflogic, you will get:
 - Possibility to make commercial research
 - Your logo to the background of Cyflogic
 - Automatic cell cycle analysis
 - Analysis package saving
 - Possibility to order customized analysis tools, such as high throughput analysis tool with the dynamic gates.

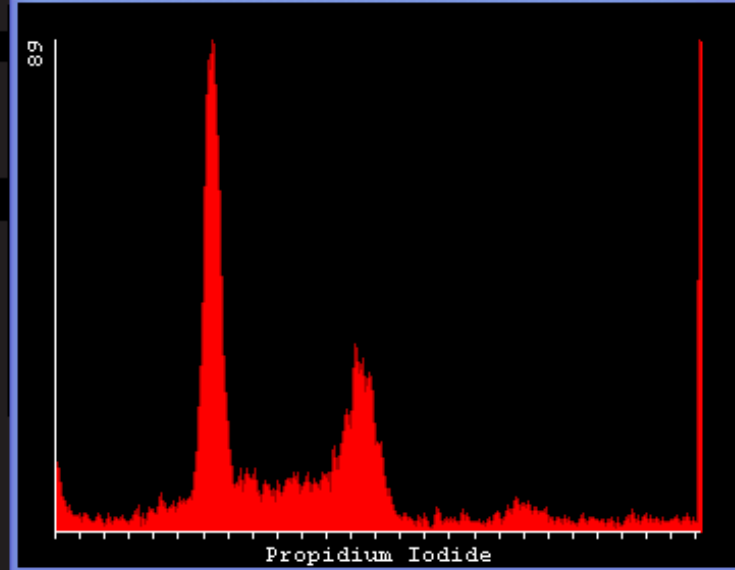


Your logo at the background

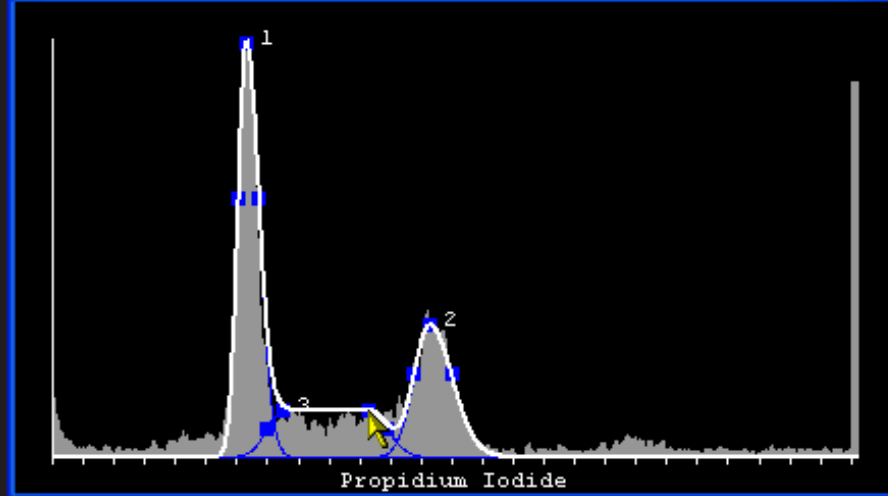
(1): Dot Plot - cell_cycle.fcs



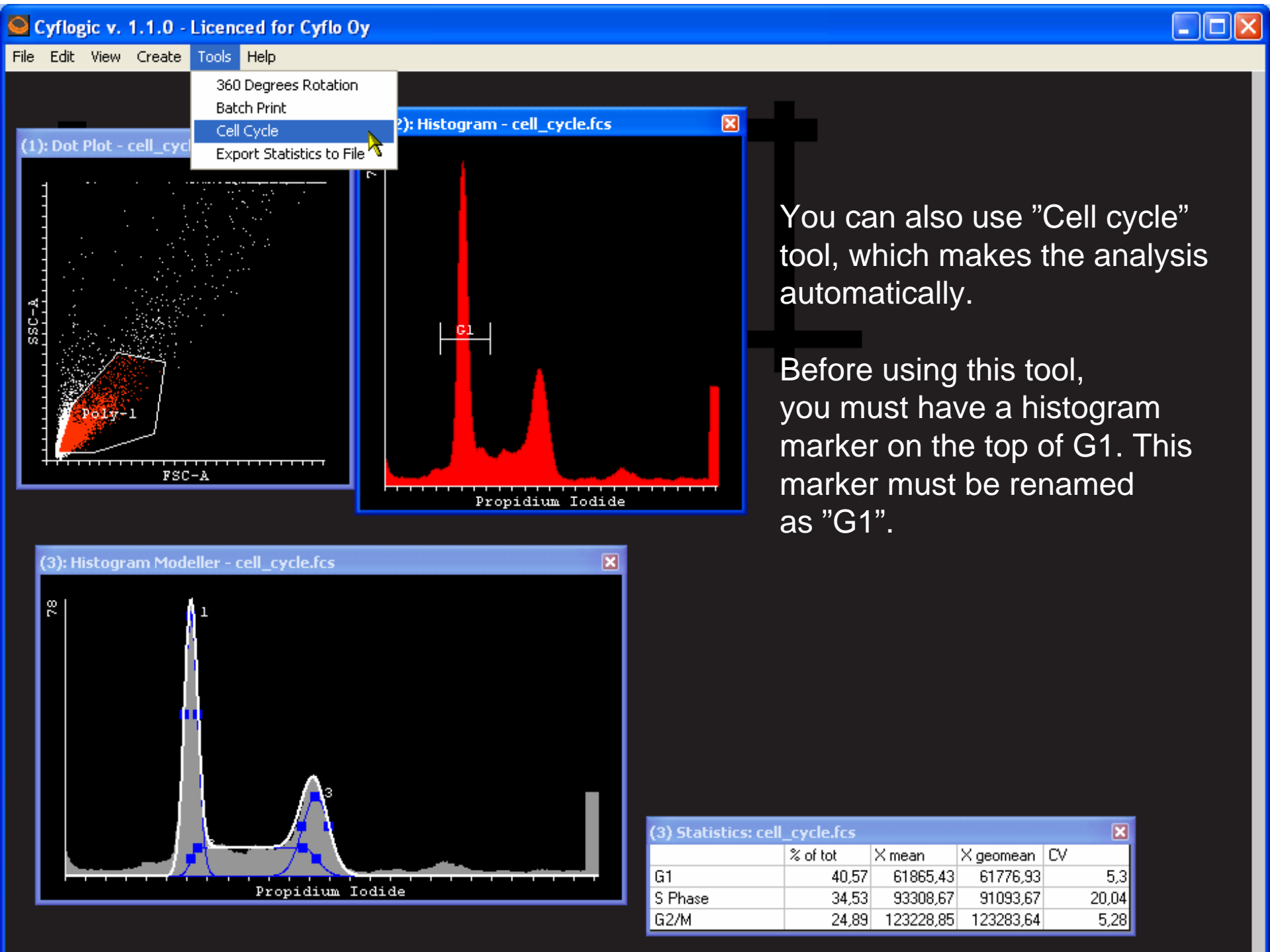
(2): Histogram - cell_cycle.fcs



[5] (3): Histogram Modeller - cell_cycle.fcs



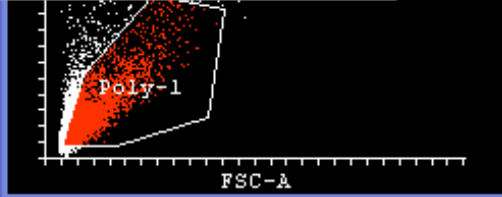
You can expand the curves of the histogram modeller into S-phases. Press CTRL button down, push left mouse button down on the top blue box of the curve. Now you can expand the plateau of the curve.



Cyflagic v. 1.1.0 - Licenced for Cyflo Oy

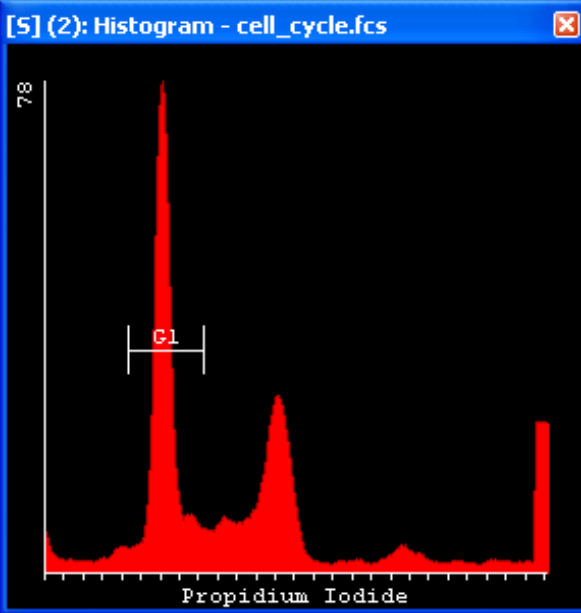
File Edit View Create Tools Help

- Open FCS... Ctrl+O
- Next file Ctrl+N
- Previous file Ctrl+P
- File name handler
- Open analysis view...
- Save analysis view...
- Save analysis package...
- Print preview
- Print...
- Exit



Poly-1

FSC-A



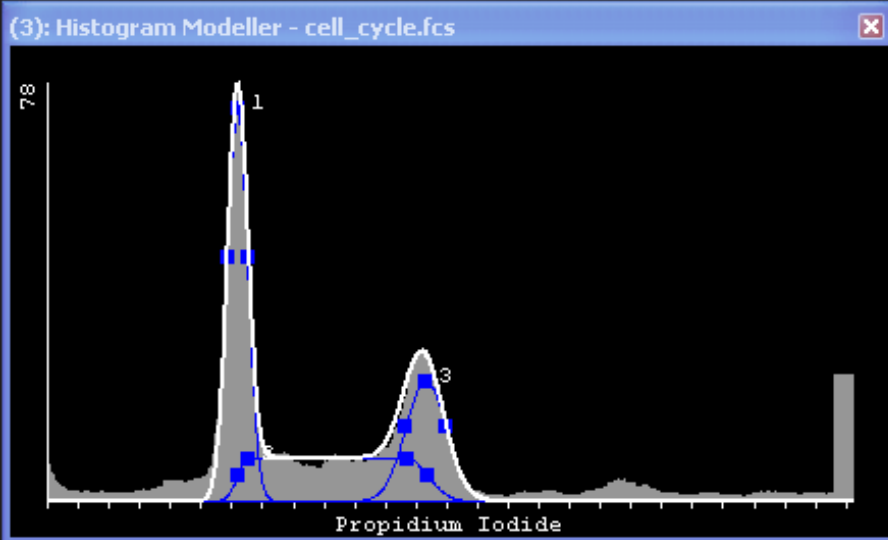
[5] (2): Histogram - cell_cycle.fcs

78

G1

Propidium Iodide

(3): Histogram Modeller - cell_cycle.fcs



78

1

2

3

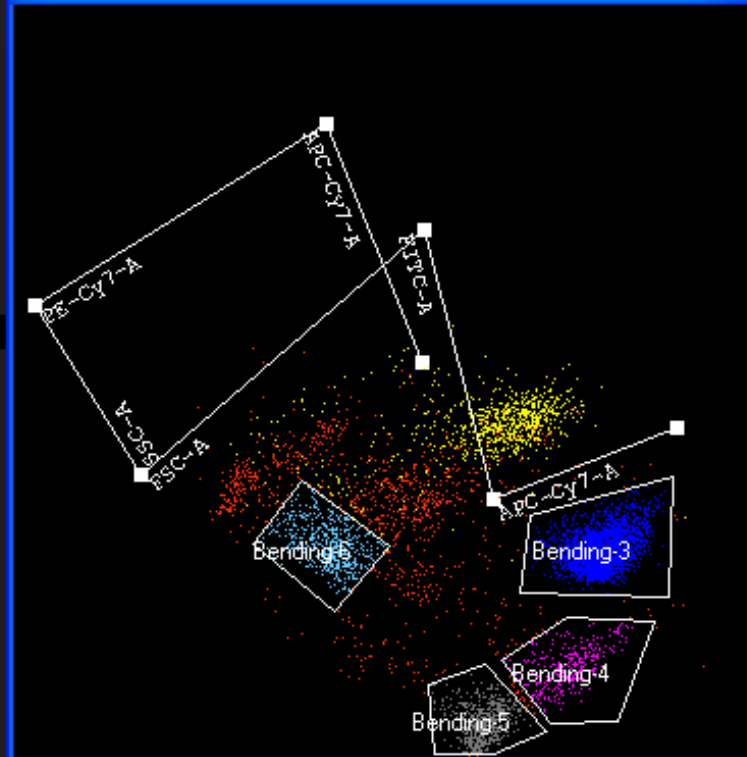
Propidium Iodide

(3) Statistics: cell_cycle.fcs

	% of tot	X mean	X geomean	CV
G1	40,57	61865,43	61776,93	5,3
S Phase	34,53	93308,67	91093,67	20,04
G2/M	24,89	123228,85	123283,64	5,28

You can save the analysis as "package". This means that the analysis file contains also the original data. You can e.g. send the package as an e-mail attachment to the collaborating researcher, without worrying whether the files are in the correct folders etc.

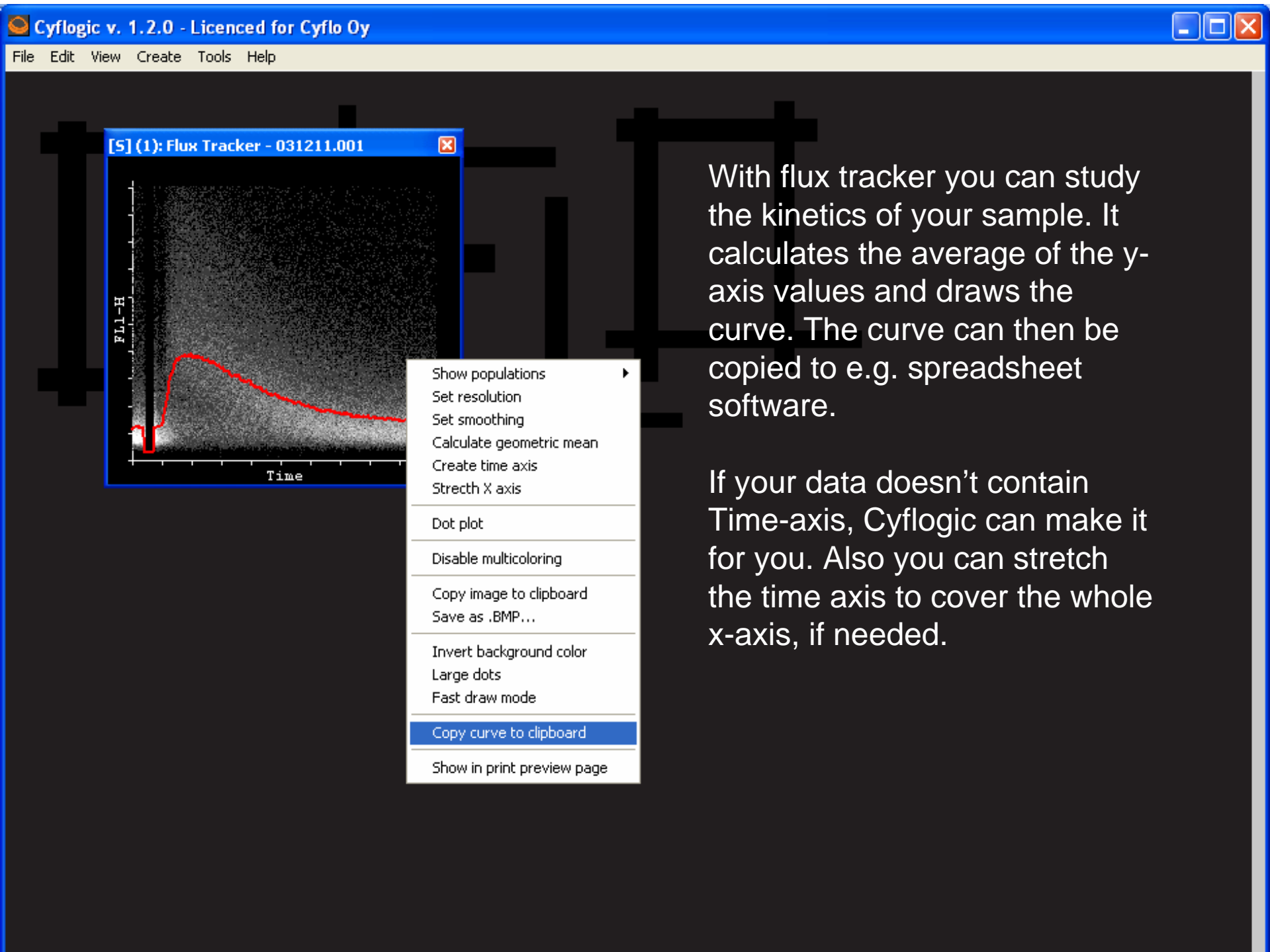
[5] (1): Bending Plot - Specimen_001_Tube_001.fcs



(1) Statistics: Specimen_001_Tube_...

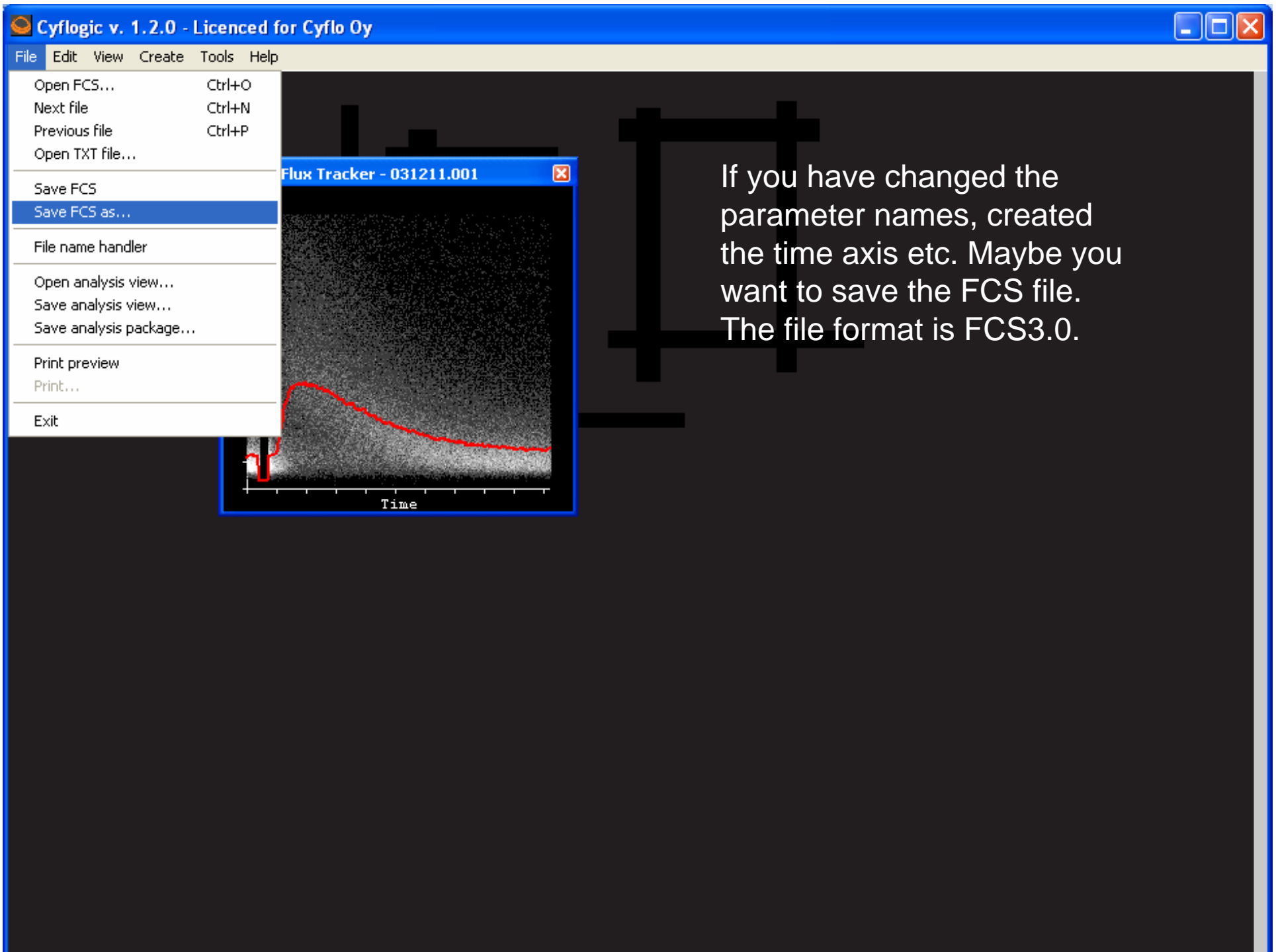
	Number	% of vis
Visible	5772	100
Bending-3	2717	47,07
Bending-4	305	5,28
Bending-5	602	10,42
Bending-6	486	8,41
Poly-1 or Poly-2	5772	100

Bending plot is a fancy tool for studying many parameters in one image. You can chain the axes and bend them as you like. The populations can be gated from the bending plot.



With flux tracker you can study the kinetics of your sample. It calculates the average of the y-axis values and draws the curve. The curve can then be copied to e.g. spreadsheet software.

If your data doesn't contain Time-axis, Cyflogic can make it for you. Also you can stretch the time axis to cover the whole x-axis, if needed.



If you have changed the parameter names, created the time axis etc. Maybe you want to save the FCS file. The file format is FCS3.0.

Customized analysis tools

Let's assume that you have a high throughput protocol which produces huge number of data. How to analyze it easily?

Contact us and buy a customized automated analysis tool. Why you should do the boring hard work, if Cyflogic can do it for you?

Check the animation in www.cyflogic.com
to see the automated analysis in action!